

2024
TERM 3, WEEK 1

IMPORTANT DATES

TERM 3, 2024

MONDAY 29TH JULY
SCHOOL COUNCIL

TUESDAY 30TH JULY
SESSION 5 YEAR 10 SENIOR
SCHOOL INFO SESSION (2.10PM IN
THE SCHOOL LIBRARY)

WEDNESDAY 31ST JULY
WHOLE SCHOOL ATHLETICS

SUNDAY 4TH AUGUST
NATIONAL ABORIGINAL AND
TORRES STRAIT ISLANDER CHILDREN'S
DAY 2024

THURSDAY 15TH AUGUST
PAT CRONIN PRESENTATION

MON 17TH – FRI 23RD AUGUST
CHILDREN'S BOOK WEEK

WEDNESDAY 21ST AUGUST
PUPIL FREE DAY

Portlines

LAKES ENTRANCE SECONDARY COLLEGE

WELCOME BACK

Welcome back to all students, families and school staff to the start of Semester Two, 2024. It is hard to believe that we are halfway through the school year already. Congratulations to all students, and a special shoutout to the junior school Year 7 students for completing their first semester of secondary school.

We hope everyone had a chance to relax through the school holidays and are ready for the productive semester ahead. The school believes in order for students to reach their full potential, there needs to be a strong partnership and open communication between home and school. We encourage students and families to contact the school in person, by phoning, emailing or through Compass to confidentially discuss any questions, concerns or wellbeing matters that may impact a student's ability to attend school and actively participate in their classes and with their peers.

The school has numerous internal and external wellbeing supports in place for students to access. If you would like your child to access these services, please speak to the Sub-School Leaders, who can discuss the different options and organise sessions.

School-wide Positive Behaviour Support

In January 2024 LESC began an exciting journey. We introduced the *School-wide Positive Behaviour Support (SWPBS)* framework to cultivate a vibrant and nurturing learning environment. SWPBS fosters positive behaviours, enhances emotional wellbeing, and enriches academic engagement for our students.

Implemented effectively, SWPBS empowers teachers and students, allowing more time for meaningful connections and focused instruction. Benefits include improved behaviour, increased instructional time, and strengthened social-emotional skills, fostering respectful relationships and a safer, more predictable learning atmosphere.

By embracing SWPBS, our school ensures a shared commitment to nurturing a positive culture, supported by clear expectations, consistent practices, and ongoing collaboration among staff, students, parents, and the community. Together, we aim to create an environment where every student can thrive academically and socially. If you'd like to know more, please contact our office or access the research and reading on the [Education Victoria website](#).

Our weekly focus for SWPBS is RESPECT: **Arrive at all scheduled activities on time**

RESPECT • TRUST • TRY



Our focus for the next week is...

*We are Respectful:
I will arrive at all
scheduled activities on time.*

Mobile Phone Policy



This is a friendly reminder to all students and families that the Department of Education Victoria has a strict NO PHONE policy during school hours. If a phone is brought to school, it is to remain in the student's locker until the end of the day school day, at 3:10pm.

If you are a parent or carer and wish to contact your child during school hours, you must contact the general office by phoning 5155 2982, and we can pass a message onto your child, or we can arrange for them to use the school phone and call you back.

Due to student privacy rights, no student is allowed to record or share recorded footage of student activity that is occurring or has occurred on school grounds. At Lakes Entrance Secondary College inappropriate use of mobile phones is any use during school hours. Students who use their personal mobile phones between the hours of 9am – 3.10pm, at Lakes Entrance Secondary College will be issued with consequences consistent with our school's existing student engagement policy. Consequences will include confiscation of mobile phones (to be collected from the General Office at the end of the school day), and suspension.

The [Department of Education's Phone Policy](#) and LESC's Mobile Phone Policy can be found attached to this Portlines Edition.

Student Lockers and Valuables

This is a friendly reminder to students to please ensure they are locking their lockers at all times. While walking around the school grounds, teachers and maintenance staff have reported a large number of lockers left unlocked with doors wide open or with no lock in use at all. Under the Department of Education and Lakes Entrance Secondary College policies and procedures, the school is unable to make an insurance claim on a student's behalf, in the unfortunate event of valuables being lost, misplaced, damaged or stolen from lockers. In the event students are required to bring valuables to school, such as phones, money and other electronics, we encourage students to hand these over to the general office at the start of the day and collect upon the end of the day. If any students require a lock, please see the general office to purchase one, or bring your own suitable lock from home.

NAIDOC Week Video

Following our celebration of NAIDOC Week at the end of Term Two, we would like to share the video made of the activities spread across the week. Head over to the [LESC Facebook Page](#) and check it out.



FREE Instrumental Music Program to Commence Term 3

LESC is excited to announce that the *Instrumental Music Program* is set to commence this term. And there is no cost to students to participate. Any students who are interested in picking up some new musical skills or continuing their existing skills can register their interest with the general office.

EAST GIPPSLAND
SHIRE LIBRARIES

FREE BOOKINGS REQUIRED

Tech Savvy Workshop My Gov and Health Services



Libraries
Change Lives

Learn how to utilise My Gov and Health Services!

This session will delve into the use of My Gov and My Health Record.

We will show you the basics of the My Gov website and what you can use it for, while also exploring some of the services offered.

This session is aimed at those who already have a basic understanding of the internet.

Book your **FREE** appointment in person at the library or by phoning **5152 4225**.

Lakes Entrance Service Centre

Thursday 8 August
9.30am – 12.00pm

Paynesville Service Centre

Thursday 8 August
9.30am – 12.00pm

Bairnsdale Library

Monday 12 August
1.00pm – 3.00pm

Orbost Service Centre

Thursday 15 August
2.00pm – 4.00pm

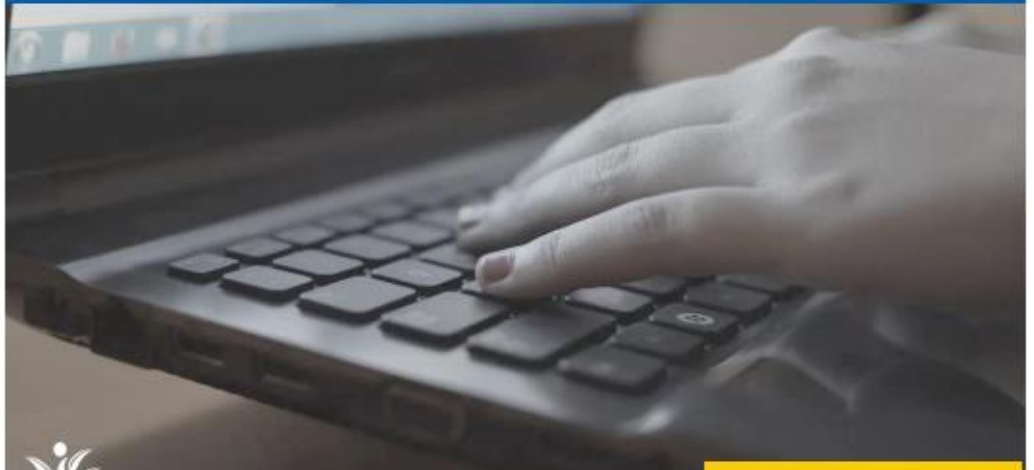
Omeo Service Centre

Monday 26 August
9.30am – 12.00pm

FREE BOOKINGS REQUIRED

EAST GIPPSLAND
SHIRE LIBRARIES

Tech Savvy Workshop Intro to Basic Computers



**MICROSOFT WINDOWS
DEVICES ONLY**

Learn more about navigating your computer or laptop!

This is a beginner workshop in continuation of last month's session teaching those new to computers and laptops how to navigate your device!

We'll teach you about applications, creating documents, saving files, and making folders. We will also give you a brief introduction to using the internet on your new device.

Bairnsdale Library
Thursday 1 August
1.00 pm – 3.30 pm

Paynesville Service Centre
Thursday 8 August
2.00 pm – 4.30 pm

Lakes Entrance Service Centre
Thursday 8 August
2.00 pm – 4.30 pm

Orbost Service Centre
Thursday 8 August
2.00 pm – 4.30 pm

Omeo Service Centre
Monday 19 August
9.30 am – 12.00 pm

Mallacoota Service Centre
Wed. 21 August
1.30 pm – 3.30 pm

Book in person at the library or by phoning
5152 4225 for this
FREE workshop.